

LAYOUT PLAN OF INDUSTRIAL AREA PANKI SITE-V (UDYOG KUNJ)

AMENDED DATE ON 21/08/1997 (ONLY FOR REFERENCE)

DISCLAIMER:-
 THIS MAP IS PROVIDED FOR INFORMATION PURPOSE ONLY AND IS NOT INTENDED FOR USE IN LEGAL PROCEEDINGS. THE ACCURACY AND QUANTITIES OF THE INFORMATION REPRESENTED ARE NOT GUARANTEED. THE INFORMATION REPRESENTED INCLUDING BOUNDARIES, LAND USE DESIGNATIONS, AND OTHER DETAILS IS SUBJECT TO CHANGE WITHOUT NOTICE. THE MAP SHOULD NOT BE USED AS A LEGAL DOCUMENT OR FOR ANY PURPOSE REQUIRING PRECISE REQUIREMENTS OF LEGAL VALIDATION, FOR OFFICIAL AND LEGALLY BINDING INFORMATION PLEASE CONSULT RELEVANT OFFICE AUTHORITY.

LAND USE ANALYSIS

S.NO	USE	AREA IN HECTARE	% TO TOTAL
1	PLOTS	39.64	67.98
2	SUB-STATION	0.80	1.03
3	COMMERCIAL	0.81	3.39
4	PARK	5.31	8.11
5	ROAD	11.95	19.49
TOTAL		58.31	100.00

STATEMENT OF PLOTS

S.NO	TYPE	SIZE IN METER	AREA IN SQ.MT.	NOS.
1	A-9	TO SIZE	11945.00	01
2	A-10	TO SIZE	7053.89	01
3	A-11	TO SIZE	3336.11	01
TOTAL				03



JOB TITLE :- LAYOUT PLAN OF

REVISED LAYOUT PLAN OF INDUSTRIAL AREA UDYOG KUNJ PANKI SITE-V

DRG TITLE: REVISED LAYOUT PLAN

REVISION NO-7

SCALE:- 1:1000 DATE: 16/5/01

DRG. NO. SIDCIATB/PAMKLA.V/KNP/2001

DRAWN BY

LAND USE ANALYSIS

S.NO	USE	AREA IN HECTARE	% TO TOTAL
1	PLOTS	37.42	64.17
2	RESERVED FOR FACILITIES	0.70	1.20
3	FLATTED FACTORY	1.17	2.01
4	SUB-STATION	0.80	1.03
5	COMMERCIAL	1.16	1.99
6	PARK	5.31	9.11
7	ROADS	11.95	20.49
TOTAL		58.31	100.00

STATEMENT OF PLOTS

S.NO	TYPE	SIZE IN METER	AREA IN SQ.MT.	NOS.
1	A-1	TO SIZE	12195.00	01
2	A-2	TO SIZE	4162.00	01
3	A-3	TO SIZE	2702.00	01
4	A-4	TO SIZE	1375.00	01
5	A-5	TO SIZE	1750.00	01
6	A-6	TO SIZE	1782.00	01
7	A-7	TO SIZE	1000.00	01
8	A-8	TO SIZE	872.00	01
9	A-9	TO SIZE	1000.00	01
10	A-10	TO SIZE	800.00	01
11	A-11	TO SIZE	800.00	01
12	A-12	TO SIZE	800.00	01
13	A-13	TO SIZE	800.00	01
14	A-14	TO SIZE	800.00	01
15	A-15	TO SIZE	800.00	01
16	A-16	TO SIZE	800.00	01
17	A-17	TO SIZE	800.00	01
18	A-18	TO SIZE	800.00	01
19	A-19	TO SIZE	800.00	01
20	A-20	TO SIZE	800.00	01
21	A-21	TO SIZE	800.00	01
22	A-22	TO SIZE	800.00	01
23	A-23	TO SIZE	800.00	01
24	A-24	TO SIZE	800.00	01
25	A-25	TO SIZE	800.00	01
26	A-26	TO SIZE	800.00	01
27	A-27	TO SIZE	800.00	01
28	A-28	TO SIZE	800.00	01
29	A-29	TO SIZE	800.00	01
30	A-30	TO SIZE	800.00	01
31	A-31	TO SIZE	800.00	01
32	A-32	TO SIZE	800.00	01
33	A-33	TO SIZE	800.00	01
34	A-34	TO SIZE	800.00	01
35	A-35	TO SIZE	800.00	01
36	A-36	TO SIZE	800.00	01
37	A-37	TO SIZE	800.00	01
38	A-38	TO SIZE	800.00	01
39	A-39	TO SIZE	800.00	01
40	A-40	TO SIZE	800.00	01
41	A-41	TO SIZE	800.00	01
42	A-42	TO SIZE	800.00	01
43	A-43	TO SIZE	800.00	01
44	A-44	TO SIZE	800.00	01
45	A-45	TO SIZE	800.00	01
46	A-46	TO SIZE	800.00	01
47	A-47	TO SIZE	800.00	01
48	A-48	TO SIZE	800.00	01
49	A-49	TO SIZE	800.00	01
50	A-50	TO SIZE	800.00	01
51	A-51	TO SIZE	800.00	01
52	A-52	TO SIZE	800.00	01
53	A-53	TO SIZE	800.00	01
54	A-54	TO SIZE	800.00	01
55	A-55	TO SIZE	800.00	01
56	A-56	TO SIZE	800.00	01
57	A-57	TO SIZE	800.00	01
58	A-58	TO SIZE	800.00	01
59	A-59	TO SIZE	800.00	01
60	A-60	TO SIZE	800.00	01
61	A-61	TO SIZE	800.00	01
62	A-62	TO SIZE	800.00	01
63	A-63	TO SIZE	800.00	01
64	A-64	TO SIZE	800.00	01
65	A-65	TO SIZE	800.00	01
66	A-66	TO SIZE	800.00	01
67	A-67	TO SIZE	800.00	01
68	A-68	TO SIZE	800.00	01
69	A-69	TO SIZE	800.00	01
70	A-70	TO SIZE	800.00	01
71	A-71	TO SIZE	800.00	01
72	A-72	TO SIZE	800.00	01
73	A-73	TO SIZE	800.00	01
74	A-74	TO SIZE	800.00	01
75	A-75	TO SIZE	800.00	01
76	A-76	TO SIZE	800.00	01
77	A-77	TO SIZE	800.00	01
78	A-78	TO SIZE	800.00	01
79	A-79	TO SIZE	800.00	01
80	A-80	TO SIZE	800.00	01
81	A-81	TO SIZE	800.00	01
82	A-82	TO SIZE	800.00	01
83	A-83	TO SIZE	800.00	01
84	A-84	TO SIZE	800.00	01
85	A-85	TO SIZE	800.00	01
86	A-86	TO SIZE	800.00	01
87	A-87	TO SIZE	800.00	01
88	A-88	TO SIZE	800.00	01
89	A-89	TO SIZE	800.00	01
90	A-90	TO SIZE	800.00	01
91	A-91	TO SIZE	800.00	01
92	A-92	TO SIZE	800.00	01
93	A-93	TO SIZE	800.00	01
94	A-94	TO SIZE	800.00	01
95	A-95	TO SIZE	800.00	01
96	A-96	TO SIZE	800.00	01
97	A-97	TO SIZE	800.00	01
98	A-98	TO SIZE	800.00	01
99	A-99	TO SIZE	800.00	01
100	A-100	TO SIZE	800.00	01
TOTAL				453

- NOTE:**
1. AREA NOT PASSION
 2. BOUNDARY LINE
 3. ABADI
 4. AMALGAMATED PLOT SHOWN AS



JOB TITLE :- LAYOUT PLAN OF

LAYOUT PLAN OF INDUSTRIAL AREA UDYOG KUNJ PANKI SITE-V

DRG TITLE: LAYOUT PLAN

REVISION NO-6

SCALE:- 1:1000 DATE: 21/08/97

DRG. NO.

SURVEY AND AREA CALCULATED BY: SUBHASH CHANDRA (J.E.) R.M. KANPUR

DELETED BY: AMT & J.K. SRIVASTAV DIMAN

JOB TITLE :- REVISED LAY-OUT PLAN OF I.A PANKI, SITE-V.KNP.

DRG. TITLE: REVISED LAY-OUT PLAN

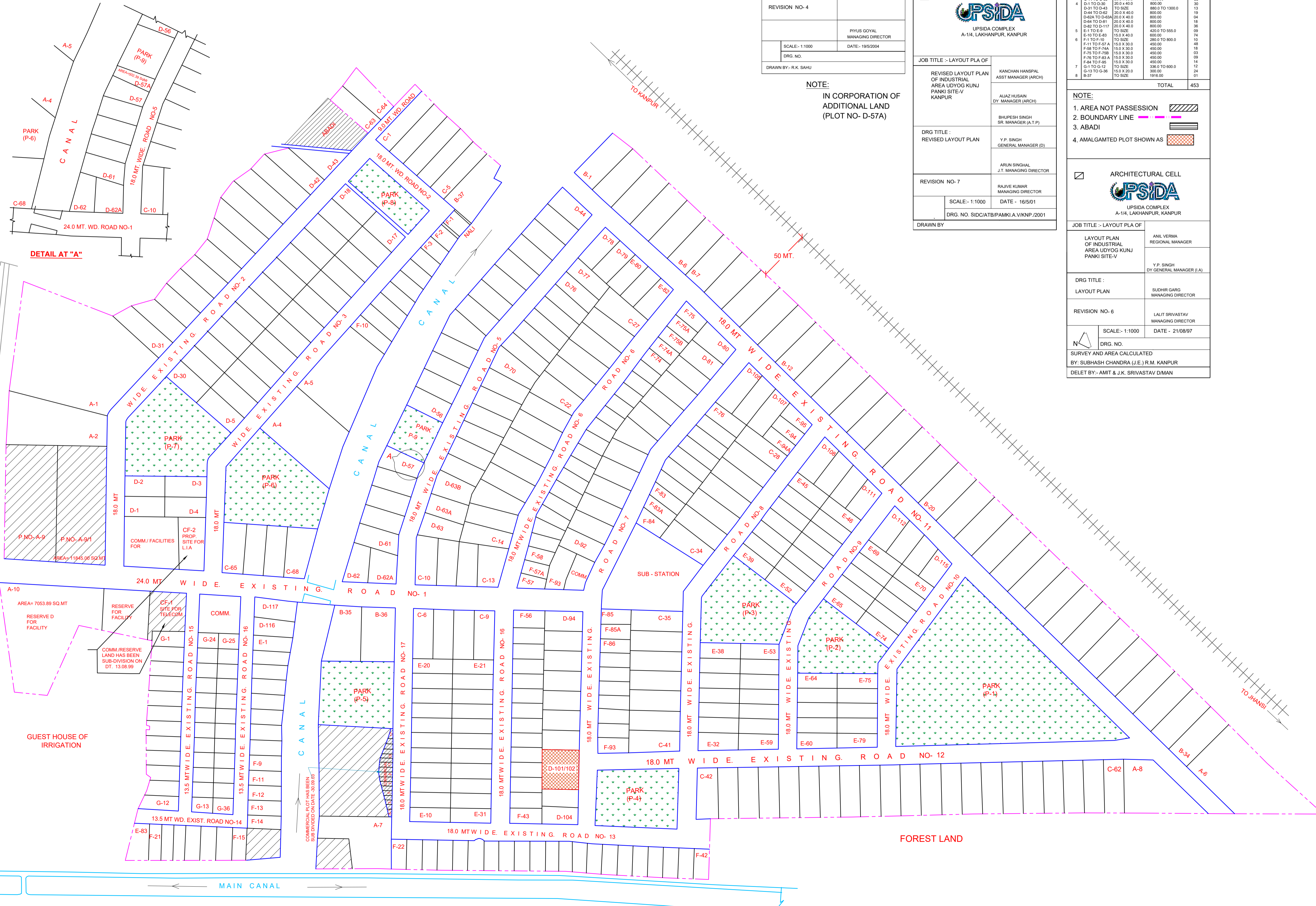
REVISION NO-4

SCALE:- 1:1000 DATE:- 19/5/2004

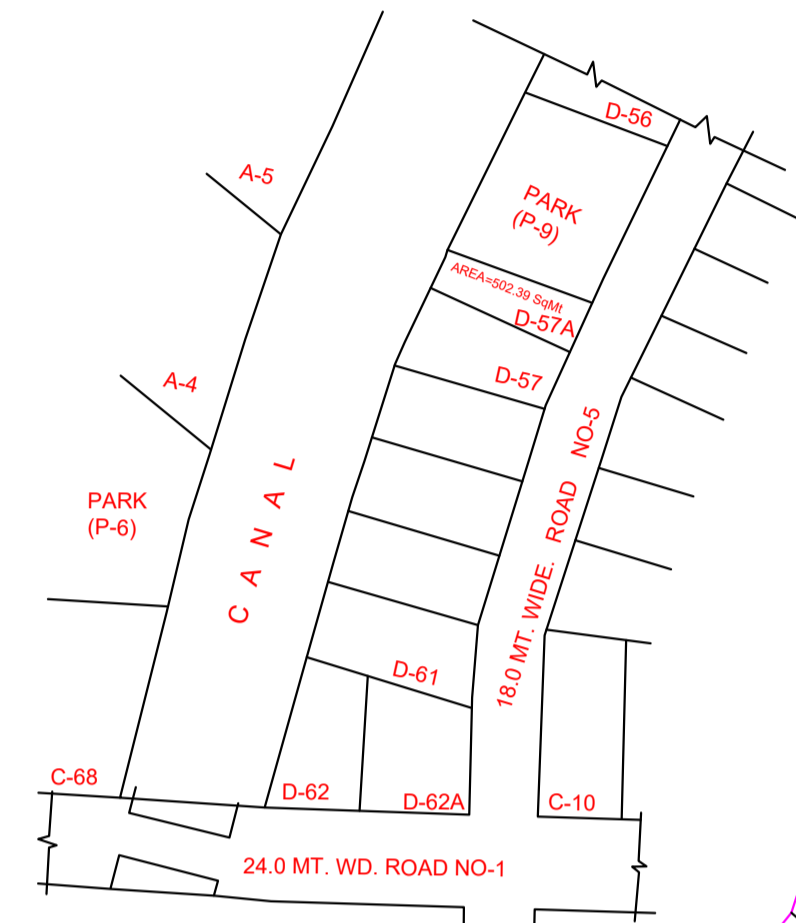
DRG. NO.

DRAWN BY:- R.K. SAHU

NOTE:
 IN CORPORATION OF ADDITIONAL LAND (PLOT NO- D-57A)



DETAIL AT "A"



PLOT NO-A-9 HAS BEEN SUB DIVIDED ON DATED: 1/10/2005

RESERVE D FOR FACILITY

COMM. RESERVE LAND HAS BEEN SUB-DIVISION ON DT: 13.08.99

COMM. RESERVE LAND HAS BEEN SUB-DIVISION ON DT: 13.08.99

COMM. RESERVE LAND HAS BEEN SUB-DIVISION ON DT: 13.08.99

COMM. RESERVE LAND HAS BEEN SUB-DIVISION ON DT: 13.08.99

COMM. RESERVE LAND HAS BEEN SUB-DIVISION ON DT: 13.08.99

COMM. RESERVE LAND HAS BEEN SUB-DIVISION ON DT: 13.08.99

COMM. RESERVE LAND HAS BEEN SUB-DIVISION ON DT: 13.08.99

COMM. RESERVE LAND HAS BEEN SUB-DIVISION ON DT: 13.08.99

COMM. RESERVE LAND HAS BEEN SUB-DIVISION ON DT: 13.08.99

COMM. RESERVE LAND HAS BEEN SUB-DIVISION ON DT: 13.08.99

GUEST HOUSE OF IRRIGATION

COMMERCIAL PLOT HAS BEEN SUB-DIVISION ON DATE: 20/08/05

FOREST LAND