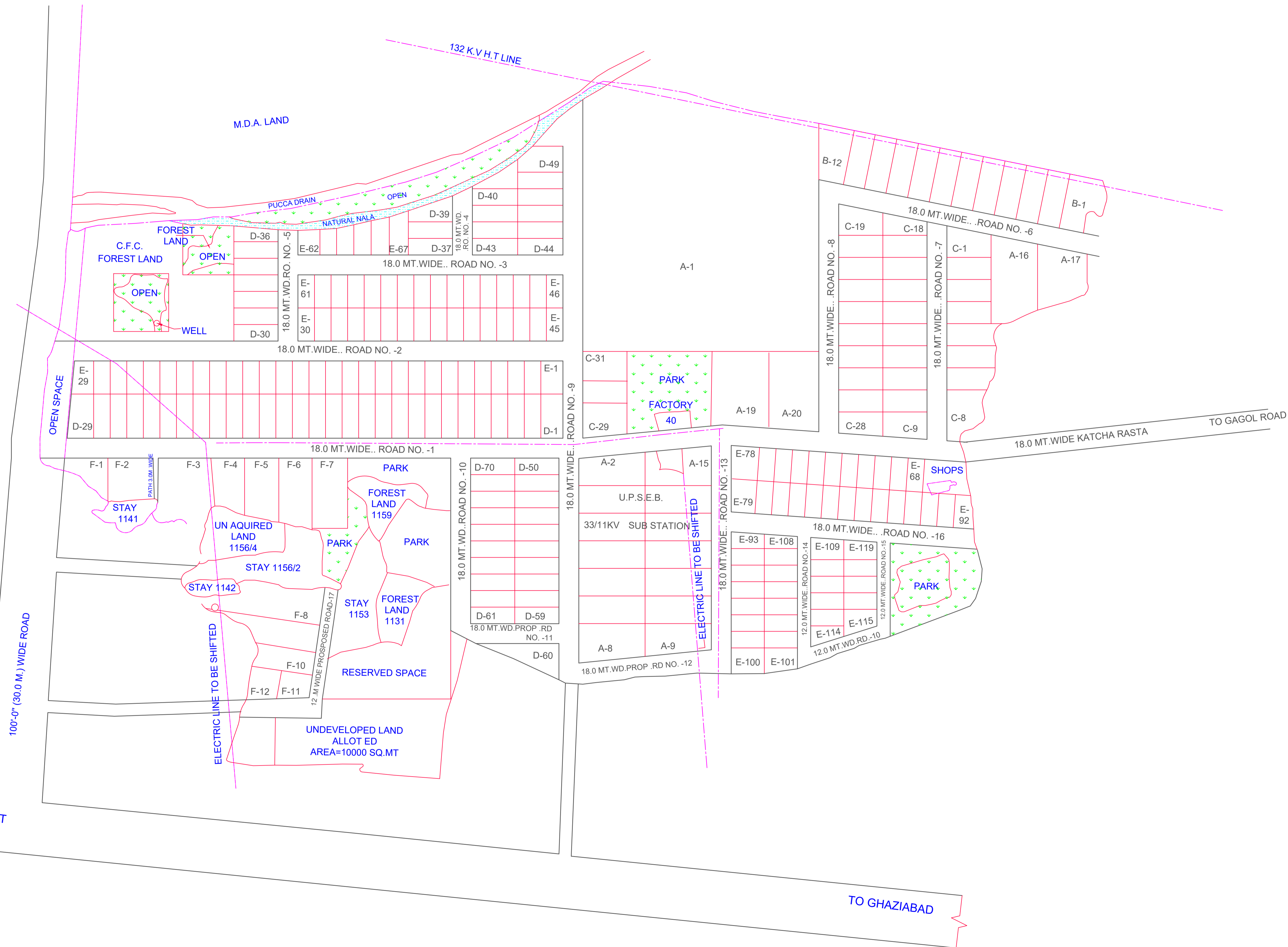


# LAYOUT PLAN OF INDUSTRIAL AREA UDYOGPURAM MEERUT

AMENDED DATE ON 13/02/1997 (ONLY FOR REFERENCE)



## LAND USE ANALYSIS

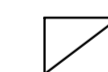
S.NO.	USE	AREA IN HECTS	%OF TOTAL
1.	PLOTS	27.40	69.37
2.	C.F.C & SHOPS	1.06	2.68
3.	PARK / OPEN SPACE / RESERVED SPACE	4.01	10.15
4.	ROAD	7.03	17.80
		39.50	100.00

## STATEMENT OF PLOTS.

S.NO.	TYPE	SIZE IN .MT	AREA IN SQ.M.	NOS.
A-1	TO SIZE		48084.00	01
A-2 TO A-15	25 X 60		1500.0	14
A-16, A-17	TO SIZE		2600.0	02
A-19	TO SIZE		3350.0	01
A-20	TO SIZE		3360.0	01
B	20 X 50		1000.0	12
C	20 X 40		800.00	31
D	15 X 40		600.0	70
E	15 X 30		450.0	119
F-1 TO F-10	TO SIZE		1200.0 TO 2728.0	10
F-11 TO F-12	TO SIZE		600.0	2
			TOTAL	262

### DISCLAIMER:-

THIS MAP IS PROVIDED FOR INFORMATION PURPOSE ONLY AND IS NOT INTENDED FOR USE IN LEGAL PROCEEDINGS. THE ACCURACY AND COMPLETENESS OF THE INFORMATION REPRESENTED ARE NOT GUARANTEED. THE INFORMATION PRESENTED HEREIN, INCLUDING BOUNDARIES, LAND USE DESIGNATIONS, AND OTHER DETAILS, IS SUBJECT TO CHANGE WITHOUT PRIOR NOTICE. THE MAP SHOULD NOT BE USED AS A LEGAL DOCUMENT OR FOR ANY PURPOSE REQUIRING PRECISE MEASUREMENTS OR LEGAL VALIDATION. FOR OFFICIAL AND LEGALLY BINDING INFORMATION PLEASE CONSULT RELEVANT OFFICE AUTHORITY.



ARCHITECTURAL CELL



UPSIDA COMPLEX  
A-1/4, LAKHANPUR, KANPUR

JOB TITLE-

LAYOUT PLAN OF UDYOGPURAM  
(GAGOL RD. ) SCHEME - SECTOR-3  
MEERUT

R.K. SRIVASTAVA  
DY. MANAGER

Y.P SINGH  
DY. GENERAL MANAGER (I.A)

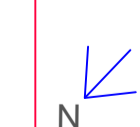
DRG. TITLE-

LAYOUT PLAN

SUDHIR GARG  
JT. MANAGING DIRECTOR

REVISION NO.3

LALIT SRIVASTAVA  
MANAGING DIRECTOR



SCALE = 1CM = 20M.

DATE - 13-02-1997

DRG.NO.

DEALT BY - ANJLI SRIVASTAVA